

EXCERPTED FROM

Woman's Day Specials

KITCHENS & BATHS

design
ideacenter

THREE SAVVY
STARS INSPIRE
OUR 2005
DESIGN IDEA
CENTER

ultimate amenities

FOOD NETWORK CHEFS TYLER FLORENCE and Rachael Ray, along with Sarah Ferguson, the Duchess of York, lent ideas and inspiration to the team producing two kitchens and one luxury bath for the National Kitchen & Bath Association's Design Idea Center at the Kitchen/Bath Industry Show in Las Vegas. In this project for Woman's Day Special Interest Publications, Dianna Holmes, design manager for cabinetmaker Canac, worked with interior designer Ingrid Leess to meet the needs of these celebrities. Each space is distinctive and personal, reflecting the taste of the star who inspired it. Although each space is a showcase, all are plausible, practical and tinged with elegance.

NKBA *The Finest Professionals in the Kitchen & Bath Industry*
National Kitchen & Bath Association



ABOVE: A brilliant blue natural quartz counter tops the island, which contains open storage on one side and two built-in cooktops on the other. Windows have adjustable blinds enclosed between layers of glass. RIGHT: In the bar area, stainless steel framed wall cabinets with textured-glass doors flank a TV mounted over the glass-door wine cooler and a dishwasher with a stainless steel front. This soft blue counter is natural quartz.



A MIX OF RUSTIC, SLEEK AND NATURAL ELEMENTS ENLIVENS THIS PLAN

TYLER FLORENCE made for a pro



RESOURCES

Cabinets: Mission, in cherry, hazelnut finish (main); Mission, in maple (island); Cosmopolitan (upper doors in bar), Canac. **Hardware:** Hafele. **Cooktops, warming drawer, microwave, oven, downdraft ventilation:** Wolf. **Refrigerator, wine storage, combo drawers:** Sub-Zero. **Dishwashers:** Asko USA. **Counters:** Silestone by Cosentino. **Sink, hot-water dispenser, faucets:** Kohler Co. **Waste disposer:** In-Sink-Erator. **Backsplash, flooring inserts:** Crossville. **Tile grout/adhesive:** Mapei. **Door:** Pella. **Ceiling planks, floor:** Armstrong. **Lighting design, light fixtures:** Task Lighting. **Wallpaper, paint:** Waverly. **TV:** Aquos, by Sharp. **Floor:** Hartco "Tuscany," Armstrong. **Cookware:** Bodum. **Small appliances:** Rowenta. **Mugs:** Vietri. **Cutting board:** John Boos & Co. **Glassware:** Libbey. **Accessories:** Gracious Home.

TYLER FLORENCE SAYS THAT THE IDEAL KITCHEN should accommodate a three-step move: nearly all the basics within arm's reach. The host of *How to Boil Water* and *Food 911* on the Food Network, he is also the author of *Tyler Florence's Real Kitchen* (Clarkson Potter, 2003) and *Eat This Book* (Clarkson Potter, 2005).

Texture and tone are the hallmarks of this design, with simple Mission-style wood cabinets in most areas, glass and stainless steel in others. Door and drawer pulls are also stainless steel. The wood colors vary from rich cherry to pale maple. "Because of all this contrasting wood," says interior designer Ingrid Leess, "we wanted a simple backsplash, so we chose 1x1-inch tiles in a classic grid pattern." The wallpaper has a textured look: cool in its indigo coloration, but subtly decorative. To add warmth, the designer had natural maple ceiling planks installed above the island.

This kitchen spotlights a new glass-door refrigerator, plus satellite drawer refrigerator and freezer units. There is a built-in wall oven, microwave and warming drawer plus a five-burner gas cooktop and an electric induction cooktop. Two dishwashers are step-saving amenities and there is a self-contained bar unit, a cook-and-eat island and an extended work surface, all topped with natural quartz.

The overall plan was based on how Florence likes to work as a chef. "Our layout was a virtual replica of a New York City apartment kitchen he always liked," says Dianna Holmes, design manager of Canac. "We also tried to pack in as much storage as possible while minimizing the upper cabinets—which create bulk and can be hard to reach. So there are deep drawer cabinets plus pull-out pantries and storage above the wall oven.

ABOVE LEFT: At the push of a button, downdraft ventilation rises noiselessly from behind the five-burner gas cooktop. Beyond it is the glass-topped electric induction cooktop. LEFT: Open-back stools pull up to one end of the counter. Behind it are open shelves, storage drawers in various sizes and a tile backsplash. Flooring is engineered hardwood.

ON THE COVER: Pendant lights hang from a panel of pale wood ceiling planks to define the island. Beyond the five-burner gas cooktop and electric induction cooktop are a built-in oven, microwave, warming drawer and refrigerator/freezer (behind doors and drawers). RIGHT: Pantries open beside a quartz-topped work area with refrigerator and freezer drawers.





White laminate planks descend behind the cooktop and wall oven, and a ceramic tile backsplash rises to meet the stainless steel hood.

RESOURCES

Cabinetry: Oxford, in maple, Nutmeg finish (wall); Hampton, in maple, Riverstone finish (base), Canac. **Hardware:** Hafele. **Gas cooktop, thermal oven, dishwasher, washer, dryer, microwave, convection oven (not shown), Bosch.** **Refrigerator:** Thermador. **Trash compactor, intercom:** Broan-NuTone. **Chimney hood:** Best by Broan. **Resilient flooring ("Urban Settings"), laminate ceiling/wall panels:** Armstrong. **Counters:** Staron acrylic solid surface, by Samsung. **Sinks, faucets, cook/faucet:** Kohler Co. **Waste disposer, hot-water dispenser:** In-Sink-Erator. **Backsplash:** Polished mosaic tile, Crossville. **Tile adhesive and grout:** Mapei. **Windows:** Designer Series, Pella. **Harvest table, cutting board:** John Boos & Co. **Lighting design, pendants, track lighting:** Task Lighting Corp. **TV:** 15-inch Aquos, by Sharp. **Wallpaper:** "Indonesian Stripe" (Echo Island Home), Gramercy. **Seat cushion, paint:** Waverly. **Steam iron:** "Perfect," by Rowenta. **Cookware:** Cuisinart. **Canisters:** Bodum. **Small appliances:** Bosch, Cuisinart, Hamilton Beach. **Accessories:** Gracious Home, Vietri.

"WHERE A KITCHEN IS CONCERNED," SAYS Rachael Ray, "I have no rules. I like to keep it fuss-free and easy to clean." The star of the Food Network's *30 Minute Meals* and *\$40 a Day*, she is the author of such books as *\$40 a Day: Best Eats in Town* (Lake Isle Press, 2004) and *Cooking 'Round the Clock* (Lake Isle Press, 2004). To fulfill Ray's cooking needs, interior designer Ingrid Leess sought "a mix of old and new, nostalgic and modern. For example, right above the cooktop is a sleekly designed exhaust hood and a backsplash of contemporary polished-ceramic mosaic tiles. But the laundry room, with cutting-edge washer and dryer, has a vintage-style sink."

At the center of the kitchen stands a mobile harvest table with oval butcher-block top, its red legs mimicking the wallpaper's dominant tone. Instead of a range, a five-burner cooktop was installed, with a wall oven underneath. This cooking zone is defined by white laminate ceiling planks that are brought down the wall behind the hood. Adjacent to the cooktop, a built-in cook/faucet unit makes pasta and soup preparation easy. An instant hot-water dispenser and food-waste disposer complement the brushed-nickel faucets and handles.

Among the other pluses is a baking center with a lowered counter and a backsplash in white frosted glass. For easy cleaning, we chose resilient flooring throughout: one pattern for the kitchen proper and one for the laundry room, a space that can be isolated by closing a pocket door. Casement windows throughout have removable wood grilles and adjustable room-dimming bamboo cellular shades that snap in and out effortlessly.



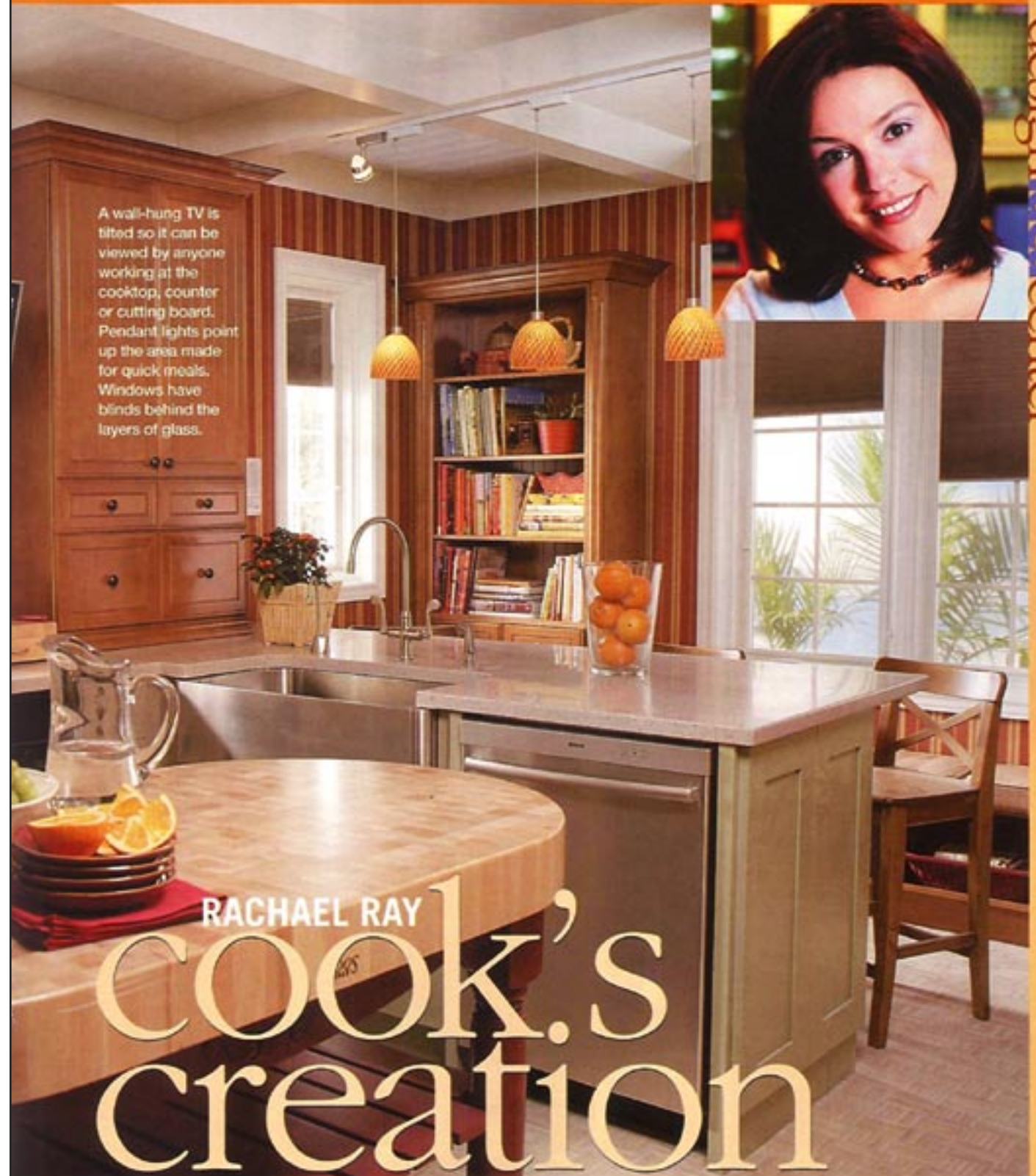
ABOVE LEFT: A giant washer and dryer dominate one end of the laundry room, set on resilient sheet flooring, with an intercom mounted on the adjacent wall to facilitate communication with other areas of a home.

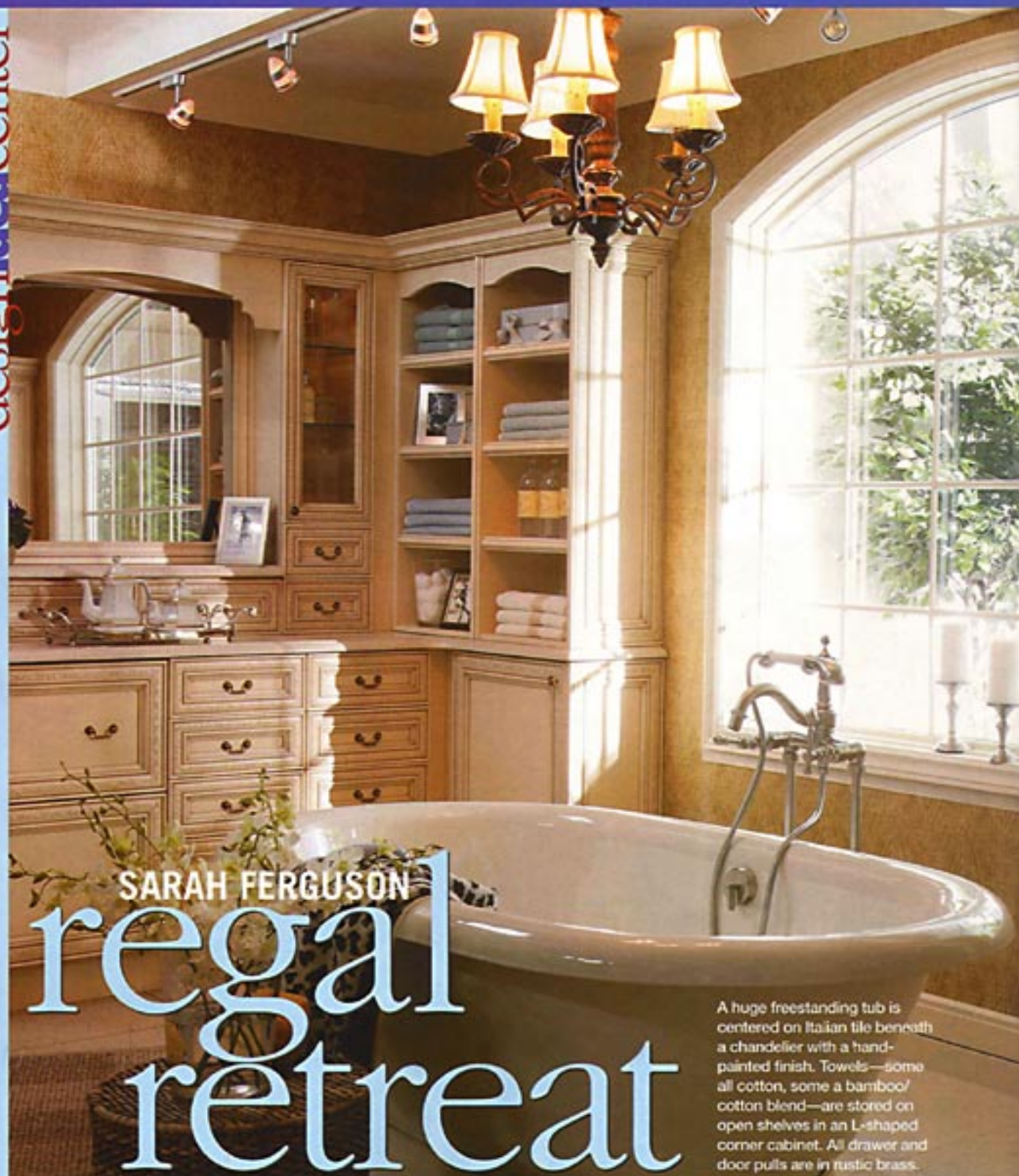
ABOVE RIGHT: A wall with cubbyhole storage makes the laundry room a dual-purpose space. A pocket door disappears with a gentle push and can be pulled shut as desired.

A wall-hung TV is tilted so it can be viewed by anyone working at the cooktop, counter or cutting board. Pendant lights point up the area made for quick meals. Windows have blinds behind the layers of glass.

RACHAEL RAY COOK'S creation

CONTRAST IS THE KEY TO THIS
KITCHEN'S CRAFTED ELEGANCE





SARAH FERGUSON
regal
retreat

A huge freestanding tub is centered on Italian tile beneath a chandelier with a hand-painted finish. Towels—some all cotton, some a bamboo/cotton blend—are stored on open shelves in an L-shaped corner cabinet. All drawer and door pulls are in rustic brass.

GRANDEUR IS ON TAP IN A LUXURY BATH FIT FOR A VERY SPECIAL DUCHESS

SARAH FERGUSON'S IDEA OF A DREAM BATH is a spa designed for pure relaxation. The Duchess of York, once married to England's Prince Andrew, second son of Her Majesty Queen Elizabeth, is a mother of two and an international spokesperson for Weight Watchers. Her latest book is *Little Red's Christmas Story* (Simon & Schuster Children's Publishing, 2004).



For her, bathroom luxury means a huge freestanding tub on its own platform, a doorless walk-in shower—with a bench—and a chair to relax in after bathing. To complete the picture we added a TV that disappears behind a mirror plus a drawer refrigerator. Toilet and bidet are in their own space, reached through a pocket door.

The chair we chose for the Duchess to lounge on is a Queen Anne-style armchair decorated by interior designer Katherine Stephens, with wood finishing by James Matar, working with three shades of wood stain plus a special wood finish and clear lacquer. A small side table is decorated in the same stain tones and clear lacquer.

Because of the Duchess' traditional nature, we selected recessed-panel cabinetry in pale maple, with leaf and flower accents etched into door borders. Extending the room's subtle natural theme, 24x24-inch Italian floor tiles with the look and feel of bamboo complement wallpaper with a leaf pattern in the main bath, open-winged butterflies behind the toilet and bidet.

Over all, there is a balance—of essentials hidden and seen, adhering to Ferguson's admonition, "No clutter, please." There are shelves for towels and toiletries, open as well as tucked behind glass, and closed cabinets for items not needing display. The choices reflect Ferguson's idea of luxury. Or, as Canac's Dianna Holmes describes it, "This bath is a very feminine space."



TOP: Open shelves of stacked towels and a towel radiator behind the multi-stained armchair and side table complete an intimate tub-side setting that is functional but truly pampering. ABOVE: A toilet and bidet (not shown) occupy a separate room that can be closed off by a pocket door. Wallpaper with butterfly motifs expresses the Duchess' flair for whimsy.

RESOURCES

Cabinets: Floret, in maple, Sandstone finish, Chocolate glazing, Canac. **Hardware:** Hafele. **Tub, faucet, toilet, bidet** (not shown): Kohler Co. **Counters:** Silestone "Capri Limestone," Cosentino. **Floor tile:** Ceramica Bardelli, from Hastings Tile & Bath. **Tile adhesive and grout:** Mapei. **Wallpaper:** "Tropical Palm Texture" (main), "Butterfly Collection" (toilet), both Echo Island Home, Gramercy. **Paint:** Waverly. **Drawer refrigerators:** Sub-Zero. **Pocket door:** CraftMaster, from Illinois Flush Door. **Door kit:** L.E. Johnson Products. **Towels:** Baltic Linen Co. **Wood chair, table, stains, lacquer:** Minwax. **Baseboard heating, towel radiator** (Solea): Runtal. **Accessories:** Gracious Home. **TV:** 26-inch Aquos, by Sharp, built into a Séura mirror.

MAJOR SPONSORS

ARMSTRONG

Wood and resilient floors, laminate ceiling planks

ASKO USA

Dishwashers (in Florence kitchen)

BOSCH

Gas cooktop, thermal oven, dishwasher (in Ray kitchen)

BROAN-NUTONE

Intercom systems, Best by Broan hood

CANAC

Wood cabinetry and project construction

CROSSVILLE

Kitchen tile backsplashes, floor inserts

HAFELE AMERICA CO.

Cabinet hardware

IN-SINK-ERATOR

Waste disposers, hot-water dispenser

ITALIAN TRADE COMMISSION

Ceramic Tiles of Italy in bath: wall and floor tile, tile adhesive and grout

JOHN BOOS & CO.

Harvest table, butcher-block cutting boards

KOHLER CO.

Kitchen/bath plumbing fixtures/fittings

L.E. JOHNSON PRODUCTS

Pocket-door frame kit and hardware

MINWAX

Queen Anne chair and table, pattern design and finishing, wood stains and lacquer

PELLA

All windows and doors, including hardware

RUNTAL NORTH AMERICA, INC.

Baseboard heating, towel radiators

SILESTONE BY COSENTINO U.S.A.

Counters (in bath and Florence kitchen)

STARON BY SAMSUNG

Counters (in Ray kitchen)

SUB-ZERO/WOLF

Appliances (in bath and Florence kitchen)

TASK LIGHTING CORP.

Lighting design, track/decorative lighting

THERMADOR

Refrigerator/freezer (in Ray kitchen)

WAVERLY

Wallpaper, paint, upholstered seat cushion

DESIGN INPUT

DIANNA HOLMES

Design Manager, Canac, a Kohler company, Thornhill, Ontario, Canada

INGRID LEES

Ingrid Lees Interior Design

New Canaan, Connecticut

MERVYN KAUFMAN

Project Director

Woman's Day Special Interest Publications

New York City



RESOURCES

Sinks, faucets, shower fittings: Kohler Co. Tile: Ceramica Viva (bath floor); Ceramica Bardelli, Rex Ceramiche Artistiche (shower walls); Sisis (shower floor); Horus Art Ceramiche (shower borders); all from Hastings Tile & Bath. Tile adhesive, grout: Mapei. Lighting design, sconces: Task Lighting Corp. Medicine cabinets: Robern. Glass electronic scale: Weight Watchers, Conair Corp. Towels: Baltic Linen Co. Wallpaper: "Tropical Palm Texture" (Echo Home Collection), Gramercy.

ABOVE: A built-in bench extends between adjustable sprays on two walls of the shower. Inset into ceramic tile walls are glass tiles in stripes.



BELOW: Two console sinks in Ferguson's favorite shade of blue make this an easily shared bath. A Weight Watchers scale is placed below towels hanging from a towel radiator, just outside the all-tile open shower. The radiator is available in both electric and hydronic models.

PRODUCED BY

HFMUS.
Hachette Filipacchi Media

www.hfmus.com